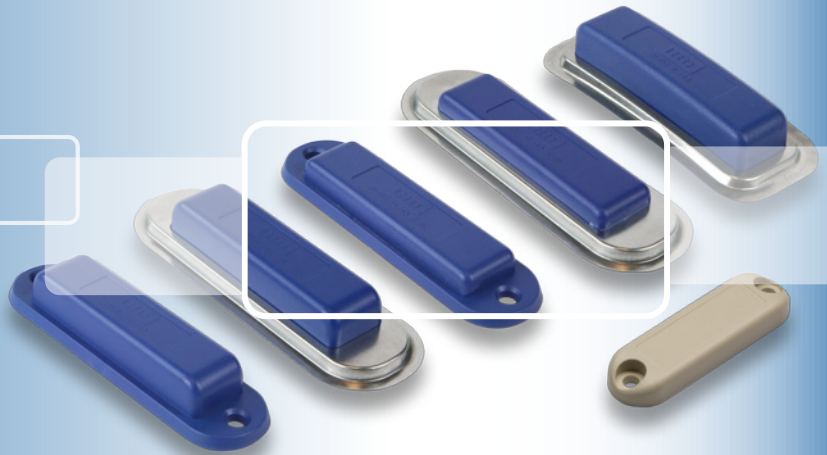


InLine Tag™ Ultra



ROBUST, ALL-PURPOSE RAIN® UHF TAGS MOUNT TO ANY SURFACE MATERIAL AND DELIVER LONG READ RANGES

- **Extreme durability** – resistant to outdoor elements as well as blunt and sharp impact
- **Multiple mounting options** – glue, screw, rivet or weld
- **Enhanced reliability** – read-write on any material, up to 26 ft (8 m)
- **Broadband frequency** – for worldwide use

HID Global's InLine Tag™ Ultra transponders are the most advanced general-purpose RAIN® UHF tags available. Choose from options that mount on any material while enabling read ranges of up to a 26 ft (8 m).

InLine Tag devices improve data collection speed and accuracy for logistics applications, while making tracking more cost-effective. These tags make it possible to identify individual, liquid-filled kegs using RFID readers, as truckloads of them pass through designated points of distribution and delivery.

RAIN UHF technology enables anti-collision functionality, fast data-rate communication and password data protection for precise, reliable reading and updating of each tag's read-write memory. All InLine Tag transponders are compliant with EPC global-certified UHF Class 1 Gen 2 readers and modules, including broadband capability for international operations.

The tough and versatile InLine Tag transponders are available for mounting on metal, plastic or wood using standard

M5 screws, rivets, industrial adhesives or welding. The tags are lightweight, waterproof and resist high-pressure/high temperature washing conditions according to the highest standard (IP69K).

InLine Tag Ultra RFID tags include HID Global's patented 3D antenna, enabling omnidirectional read range performance independent of mounting material. The larger tags also enable maintenance of separate public and private profiles for added data security.

The InLine Tag Ultra Curve version is arched to hug metallic kegs or gas cylinders, and durably withstands typical washing and disinfection cycles. Slim versions of the tags enable optimal UHF performance for space-restricted applications, and are configured for attachment via screw or weld.

With the smallest footprint, the Mini version is ideal for tagging roll-cages, boxes, furniture or tools. They attach to any material, and deliver excellent size-to-performance ratios.

TECHNOLOGY HIGHLIGHTS:

- Worldwide operating frequencies from 860 to 960 MHz
- Fully interoperable; standards compliant
- Reliable performance on both metal and non-metal surfaces
- Waterproof under high pressure / high temperature conditions; chemical and impact resistant
- Mounting options include nails, screws, rivets, welding and glues
- Large memory of up to 512-bit user memory and 128-bit EPC

APPLICATION AREAS:

- **Asset tracking and logistics**
 - Postal and road toll management: truck, wagon and train tracking
 - Supply chain management: pallet and goods tracking
 - Furniture, boxes and tools
- **Returnable transport items**
 - Shipping container tracking
 - Metal keg and gas cylinder identification
- **Waste management**
 - Commercial and industrial bin identification



HID Global can create a custom tag solution to fit your application requirements for chip type, dimensions, programming and materials.



hidglobal.com

North America: +1 512 776 9000
Toll Free: 1 800 237 7769
Europe, Middle East, Africa: +44 1440 714 850
Asia Pacific: +852 3160 9800
Latin America: +52 55 5081 1650

© 2017 HID Global Corporation/ASSA ABLOY AB. All rights reserved. HID, HID Global, the HID Blue Brick logo, the Chain Design and InLine Tag are trademarks or registered trademarks of HID Global or its licensor(s)/supplier(s) in the US and other countries and may not be used without permission. All other trademarks, service marks, and product or service names are trademarks or registered trademarks of their respective owners.

2017-02-03-hid-rfid-il-inline-tag-ultra-family-ds-en PLT-00277

An ASSA ABLOY Group brand

SPECIFICATIONS

	InLine Tag™ Ultra					
	Mini	Standard	Weld	Slim	Slim Weld	Curve
Base Model Number	6F1987-102	6A7980 (blue) 6A7980-102 (grey) 6A7980-120 (grey, 1D-barcode)	6A7981	6A7983	6A7984	6A7982
ELECTRONIC						
Operating Frequency	865-956 MHz (worldwide)					
Chip Type	Monza R6	Monza 4QT				
Memory	96 bit EPC + 48 bit TID	128 bit EPC + 96 bit TID + 512 bit user memory				
Anti-Collision	Yes					
Reading Distance (2W reader ERP, free space)	Up to 9.8 ft (3 m)	Up to 26.2 ft (8 m)		Up to 16.4 ft (5 m)		Up to 26.2 ft (8 m)
PHYSICAL						
Dimensions	2.4 × 0.7 × 0.3 in (60 × 18 × 8 mm)	3.8 × 1.1 × 0.6 in (97 × 27 × 15 mm)	4.1 × 1.4 × 0.6 in (105 × 35 × 15 mm)	3.8 × 1.1 × 0.4 in (97 × 27 × 10 mm)	4.1 × 1.4 × 0.4 in (105 × 35 × 10 mm)	3.5 × 1.5 × 0.6 in (88 × 37 × 14.5 mm); 17.7 in (450 mm) curve radius
Mounting Method	Screw, rivet	Screw	Weld	Screw	Weld	
Screw Mounting Hole	Ø 0.2 in (4.5 mm)	Ø 0.2 in (5.2 mm)		Ø 0.2 in (5.2 mm)		
Affixes To	All surfaces, including metal, plastic, wood					Curved metal
Housing Material	PC/ABS high impact		PC/ABS high impact, stainless steel ring	PC/ABS high impact	PC/ABS high impact, stainless steel ring	
Color	Grey	Pantone blue 287C or grey (custom colors available)				
Weight	0.2 oz (6.3 g)	0.5 oz (16 g)	0.6 oz (18 g)	0.4 oz (12 g)	0.5 oz (14 g)	0.5 oz (15 g)
CHEMICAL AND MECHANICAL						
Water	IP68, IP69K, 176° F (80° C), 100 bar, 30 sek. 16 l/min					
Withstands Exposure To	Mineral oil, petroleum, salt mist, vegetable oil; up to 80% humidity at 158° F (70° C)					
Environmental Test Conditions	68° F (20° C), 100 h					
Vibration	IEC 68.2.6 [10 g, 10 to 2000 Hz, 3 axis, 2.5 h]					
Shock	IEC 68.2.29 [40 g, 18 ms, 6 axis, 2000 times]					
Impact	IEC 62262-IK07		IEC 62262-IK09			IEC 62262-IK08
Axial/Radial Force	1000 N, 10 sec					
THERMAL						
Storage	-40° to +185° F (-40° to +85° C), 1x1000 h					
Operating Temperature	-40° to +185° F (-40° to +85° C)					
Shock/Fatigue	-40° to +185° F (-40° to +85° C), 100 x 5 min with 20 sec transition					
OTHER						
Standards	UHF EPC Class 1 Gen 2, ISO 18000-6C, ISO 17364, DIN 40050-9					
Options	Custom embossed logo, no logo or custom tag color. Laser engraving of custom logo, barcode or text on grey tag versions. By default, grey tags are supplied without logo or laser engraving.					
Box Size	250 pcs.	240 pcs.		360 pcs.		240 pcs.
Warranty	2 Years					